

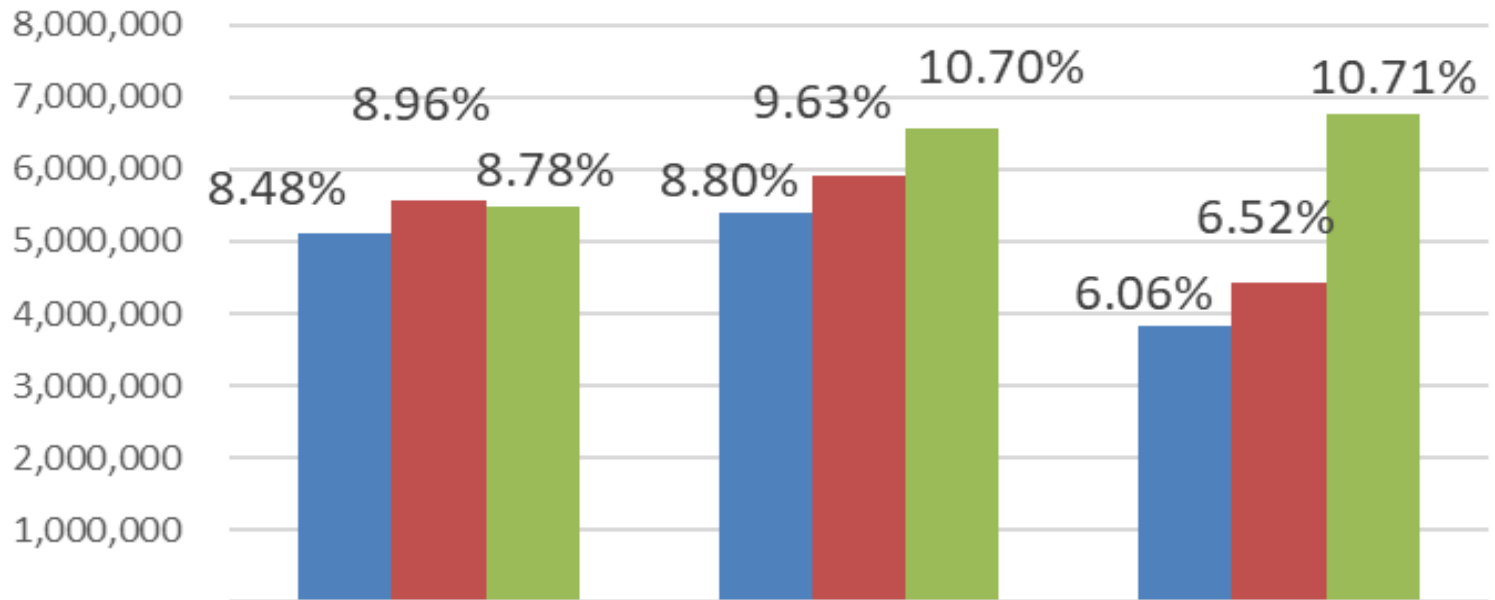


2020-21 Second Interim Report as of January 31, 2021

Presented to the Board of Trustees, March 9, 2021

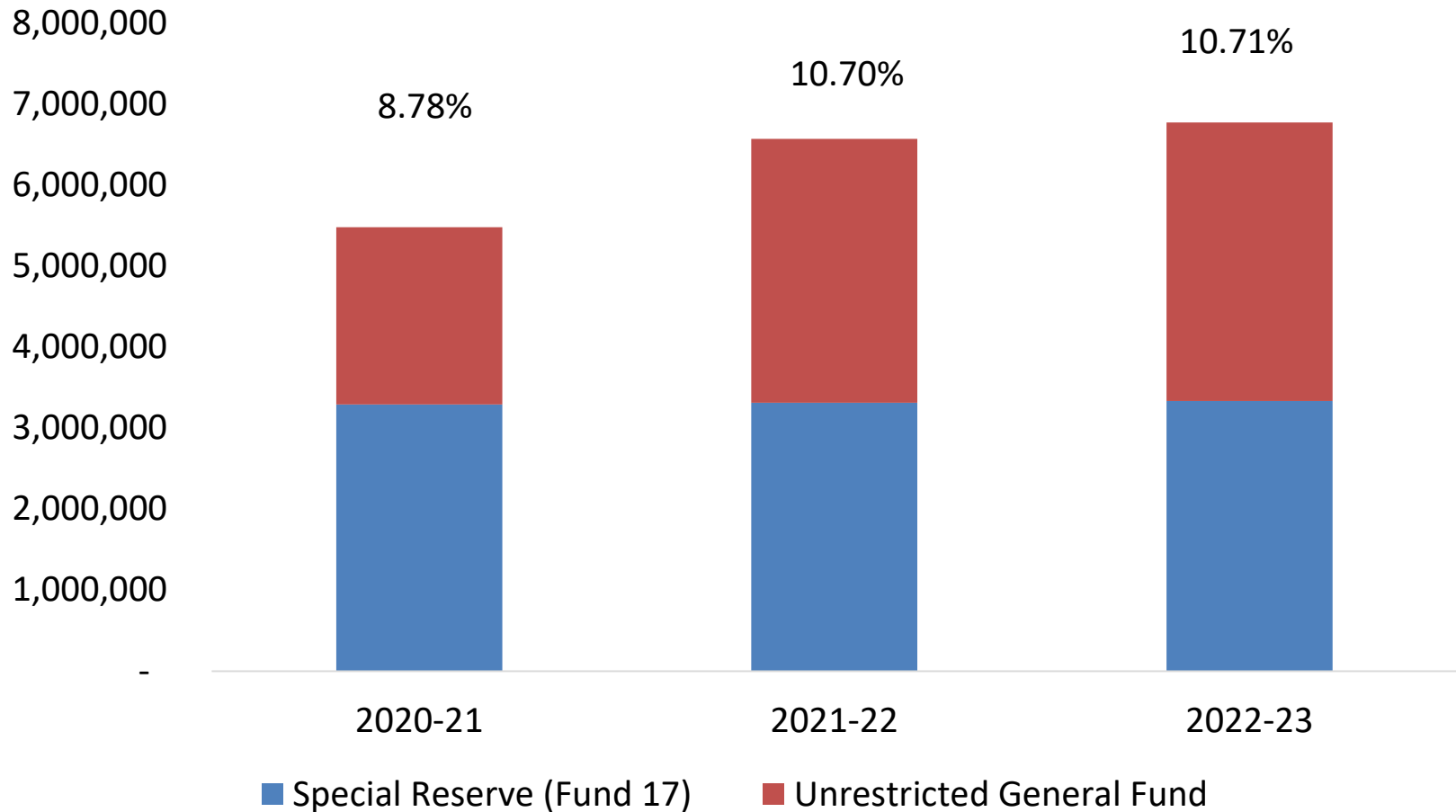
Projected Reserves

Reserves



	2020-21	2021-22	2022-23
■ Adopted Budget	5,103,275	5,396,284	3,820,986
■ First Interim	5,563,335	5,898,801	4,412,610
■ Second interim	5,477,776	6,570,002	6,770,446

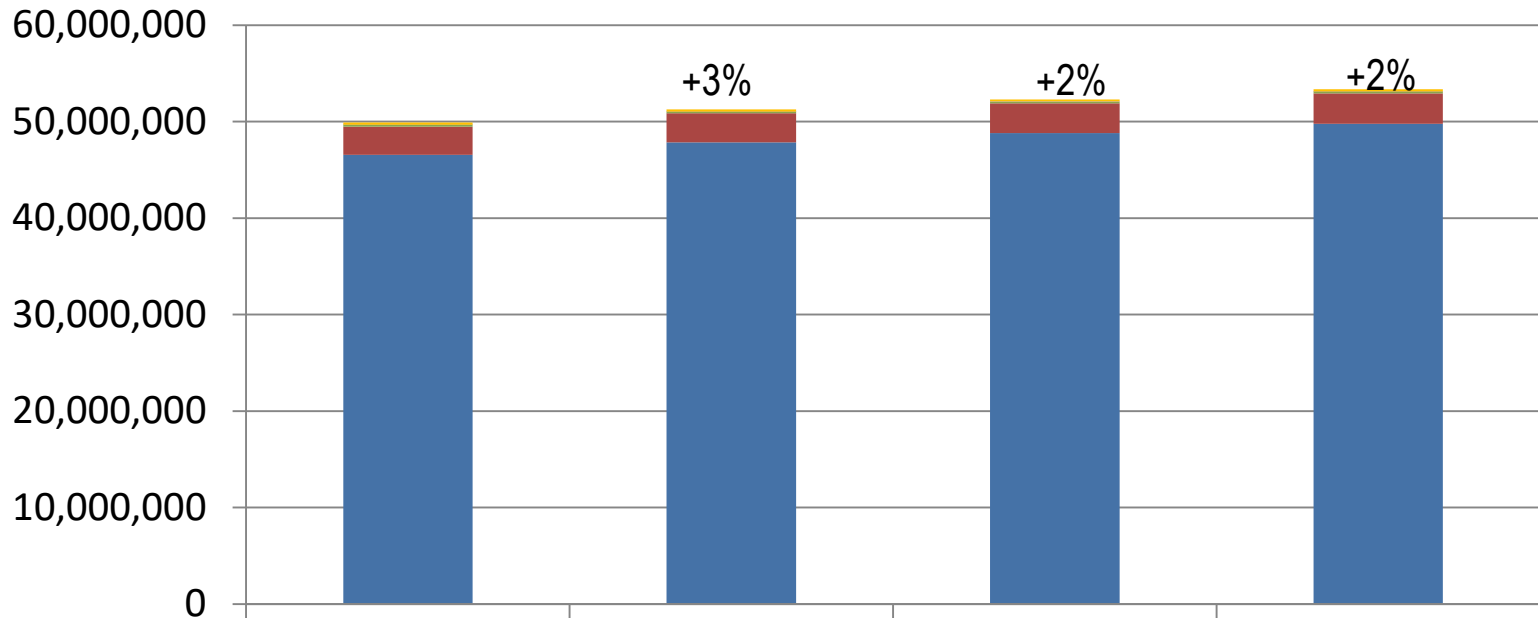
Reserve Components



Changes in Revenue

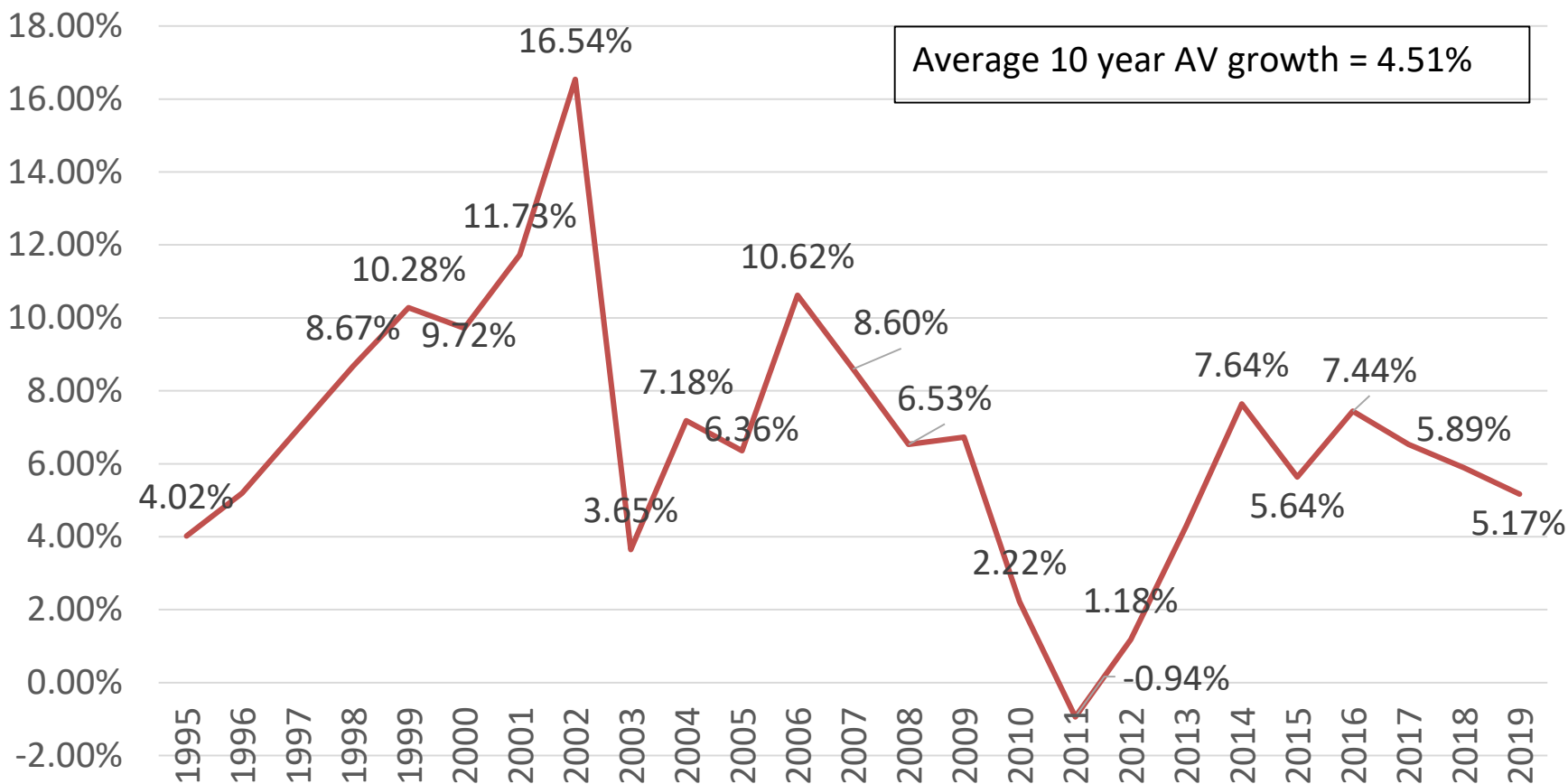
- Property tax estimates show a minor increase compared to First Interim, which included a 3% increase.
- Unrestricted Local Revenue has been reduced to reflect a decrease in Rents and Leases.
- Contributions to restricted programs have been updated to most recent estimates.

Property Tax Projection

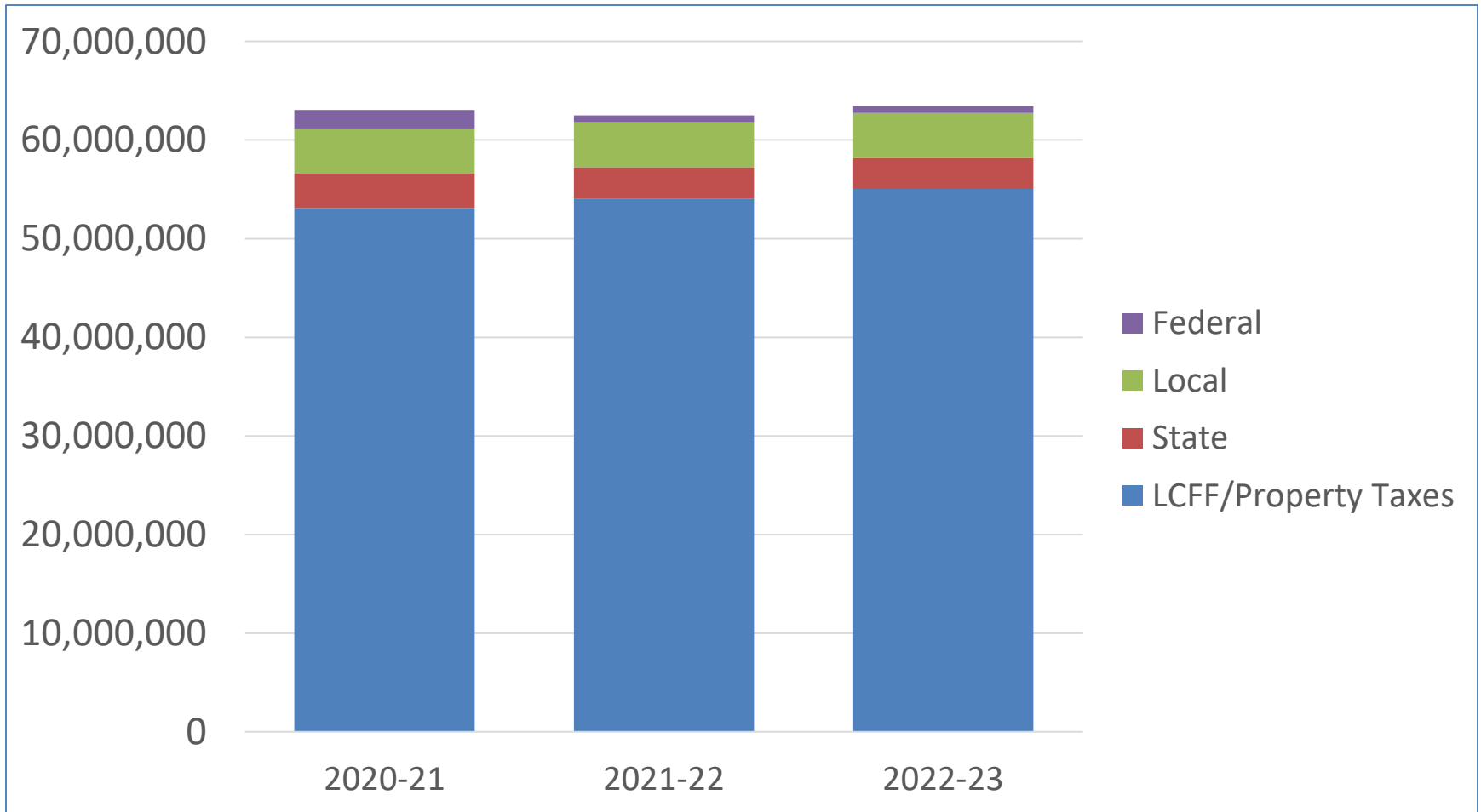


	2019-20	2020-21	2021-22	2022-23
TOTAL	49,906,432	51,266,062	52,311,022	53,352,601
Redevelopment (statutory)	227,284	226,600	226,600	226,600
Other	9,303	9,366	5,477	5,477
Homeowners' Exemption	186,658	165,000	196,547	200,478
Unsecured	2,936,426	3,024,941	3,085,440	3,147,149
Secured	46,546,761	47,840,155	48,796,958	49,772,897

Percentage Change in Assessed Valuation LGSUHSD



Total General Fund Revenue Projection (Unrestricted and Restricted)



Changes in Expenditures

- Salaries and benefits have been adjusted to reflect actual current staffing costs
- Other categories have been adjusted to reflect spending trends

COVID-19 Related Revenue and Expenditures



Item	Amount
Learning Loss Mitigation Funds (Federal and State Revenue)	\$1,330,000*
Additional Student Support (Staffing, Tutoring, mental health, etc.)	(340,000)
Distance Learning Technology and Connectivity (Hardware and Software)	(450,000)
Personal Protective Equipment and Cleaning	(185,000)
School Readiness (signage, health offices, Plexiglass, etc.)	(155,000)
HVAC filters and improvements	(200,000)

* Deadline of December 30, 2020 for the Federal portion of funding (\$875K).

2020-21 Additional Estimated COVID-19 Related Expenditures



Additional Student Support (Staffing, Tutoring, mental health, LVN, etc.)	\$200,000
Distance Learning Technology and Connectivity (Hardware, Software, Cameras)	100,000
Personal Protective Equipment and Cleaning	200,000
HVAC filters and improvements	200,000
Extended Learning Time	250,000
Total	\$950,000
Recently approved legislation will provide additional funding	

